

How to Use ParentConnection

WELCOME PARENTS!

This job aid will help you find and log into ParentConnection, and step you through some of the features that make ParentConnection a great way to track you child's progress and help them continue to excel at Challenger Middle School.

FINDING PARENTCONNECTION & LOGGING IN

Step 1

To access ParentConnection, please go to www.challengerms.org and click on ParentConnect located under "Web Links".

The ParentConnection Login window will appear.

Step 2

Enter your PIN and Password

Then, click Logon



***IMPORTANT:** You must allow pop-ups for this site in your Internet web browser.

CHANGING YOUR PASSWORD

IMPORTANT! - First-Time Visitors - Change Your Password!

If this is your first time accessing ParentConnection, the first thing you should do after logging in is to change your password.

Step 1

Click on Account at the top right of the page.



The Account Maintenance window appears.



Step 2

Enter your Current Password for authentication.

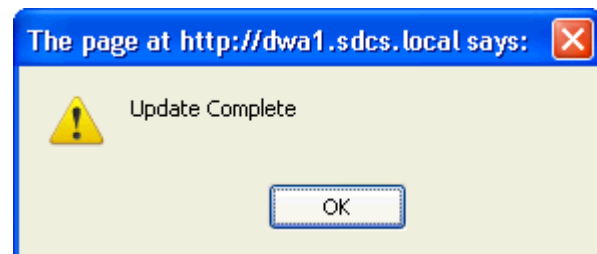
Type in your New Password.

Type it again in the Confirm field.

Click the Submit button.

The screenshot shows a form with the following fields: "Current Password:" with a masked input field (*****); "Email Address:" with a text input field; "New Password:" with a masked input field (*****); and "Confirm:" with a masked input field (*****). At the bottom right, there are two buttons: "Submit" and "Cancel".

The Update Complete window pops up. Click OK.

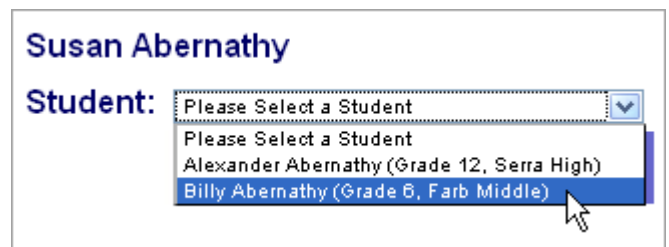


Once you click OK, you're returned to the ParentConnection main page.

USING PARENTCONNECTION

Step 1

If you have more than one child at a school with ParentConnection, select which child's information to access via the Student drop-down menu at the left.



Step 2

You access your child's information by clicking on the links on the left column.

[Demographics](#)

Demographics – The demographic data on your child. You may want to review this page to be sure that the school has the most up-to-date information.

[Contacts](#)

Contacts – This page lists your child's contact information, including parent or legal guardian, and emergency contacts. Here again, you may wish to review this information to be sure that the school has the most up-to-date information.

[Schedule](#)

Schedule – This page lists your child's current class schedule.

[Attendance](#)

Attendance – This page contains any pertinent information regarding your child's attendance including tardies, unexcused absences, and truancies.

[Assignments](#)

Assignments – Here you can view your child's progress in their classes. This page defaults to showing the most current assignments. If you click on **Show All Assignments** in the upper-left corner, you can see all assignments. Items in red are missing assignments. Remember, you will only be able to view the gradebooks of teachers who are currently using the **Zangle Gradebook** program. Please give teachers a few days to grade an assignment and post the information to the website. Each teacher will post information on their own timeline. You may contact the teacher if you do not see the assignment grade posted within a reasonable amount of time.

[Marks](#)

Marks – Here you will view Progress Reports and Report Cards which are issued every 6 weeks.

[Transcript](#)

Transcript – This page includes only semester grades for classes taken in middle and high schools. If your student attended elementary school for 6th grade, his/her grades may not show up on the transcript.

[GPA](#)

GPA – Here you will see your child's GPA (Grade Point Average) history.

[Testing](#)

Testing – This page includes your child's testing history. If you click on **Show All Assignments** in the upper-left corner, you can see assessments such as CST (California Standards Test) and CELDT (California English Language Development Test).